

Krome Base Mounted Retro Fit Soft Close Range

Krome Soft Close Twin Bin 30L (2 x 15L)

- Width: 340mm
- Depth: 510mm
- Height: 330mm
- All Krome bins feature soft close runners as standard
- Base mounted
- Simple, economical and versatile product
- Ideal solution for every kitchen



DESCRIPTION	CODE
KROME SOFT CLOSE TWIN BIN 30L (2 X 15L)	150450

Krome Soft Close Twin Bin 30L (1 x 20L + 1 x 10L)

- Width: 262mm
- Depth: 510mm
- Height: 420mm
- All Krome bins feature soft close runners as standard
- Base mounted
- Simple, economical and versatile product
- Ideal solution for every kitchen



DESCRIPTION	CODE
KROME SOFT CLOSE TWIN BIN 30L (1 X 20L + 1 X 10L)	150454

Krome Soft Close Twin Bin 40L (2 x 20L)

- Width: 340mm
- Depth: 510mm
- Height: 430mm
- All Krome bins feature soft close runners as standard
- Base mounted
- Simple, economical and versatile product
- Ideal solution for every kitchen



DESCRIPTION	CODE
KROME SOFT CLOSE TWIN BIN 40L (2 X 20L)	150451



KROME

Bin and Laundry Range

LOCATIONS

NSW

Sydney - Head Office
19 Wonderland Drive,
Eastern Creek NSW 2766
Phone: 1300 668 371
Fax: 1300 668 372

Newcastle
93 Munibung Road,
Cardiff NSW 2285
Phone: (02) 4956 6626
Fax: (02) 4956 6619

Port Macquarie
40 Jindalee Road,
Port Macquarie NSW 2444
Phone: (02) 6581 2202
Fax: (02) 6581 2220

Wollongong
3 Lady Penryhn Drive,
Unanderra NSW 2526
Phone: (02) 4271 3266
Fax: (02) 4271 7800

Central Coast
30 Ace Crescent,
Tuggerah NSW 2259
Phone: (02) 4351 2444
Fax: (02) 4351 2455

Orange
38 Leewood Drive,
Orange NSW 2800
Phone: (02) 6362 9666
Fax: (02) 6361 4513

Wagga Wagga
1B Wentworth Street,
Wagga Wagga NSW 2650
Phone: (02) 6921 6499
Fax: (02) 6921 7411

QLD

Brisbane - Main Office
Unit 4/22
Eastern Service Road,
Stapylton QLD 4207
Phone: 1300 599 057
Fax: 1300 599 347

Bundaberg
Phone: 0421 618 639

Sunshine Coast
Phone: 0401 447 574

Townsville
1/33 Hugh Ryan Drive,
Garbutt QLD 4814
Phone: (07) 4775 3500
Fax: (07) 4779 3390

ACT

Fyshwick
Unit 10/145-147 Gladstone Street,
Fyshwick ACT 2609
Phone: (02) 6299 1100
Fax: (02) 6147 3505

VIC

Melbourne
30 Jersey Road,
Bayswater VIC 3153
Phone: (03) 9729 0666
Fax: (03) 9720 5175

NOVER & CO PTY LIMITED
ABN 15 001 706 038

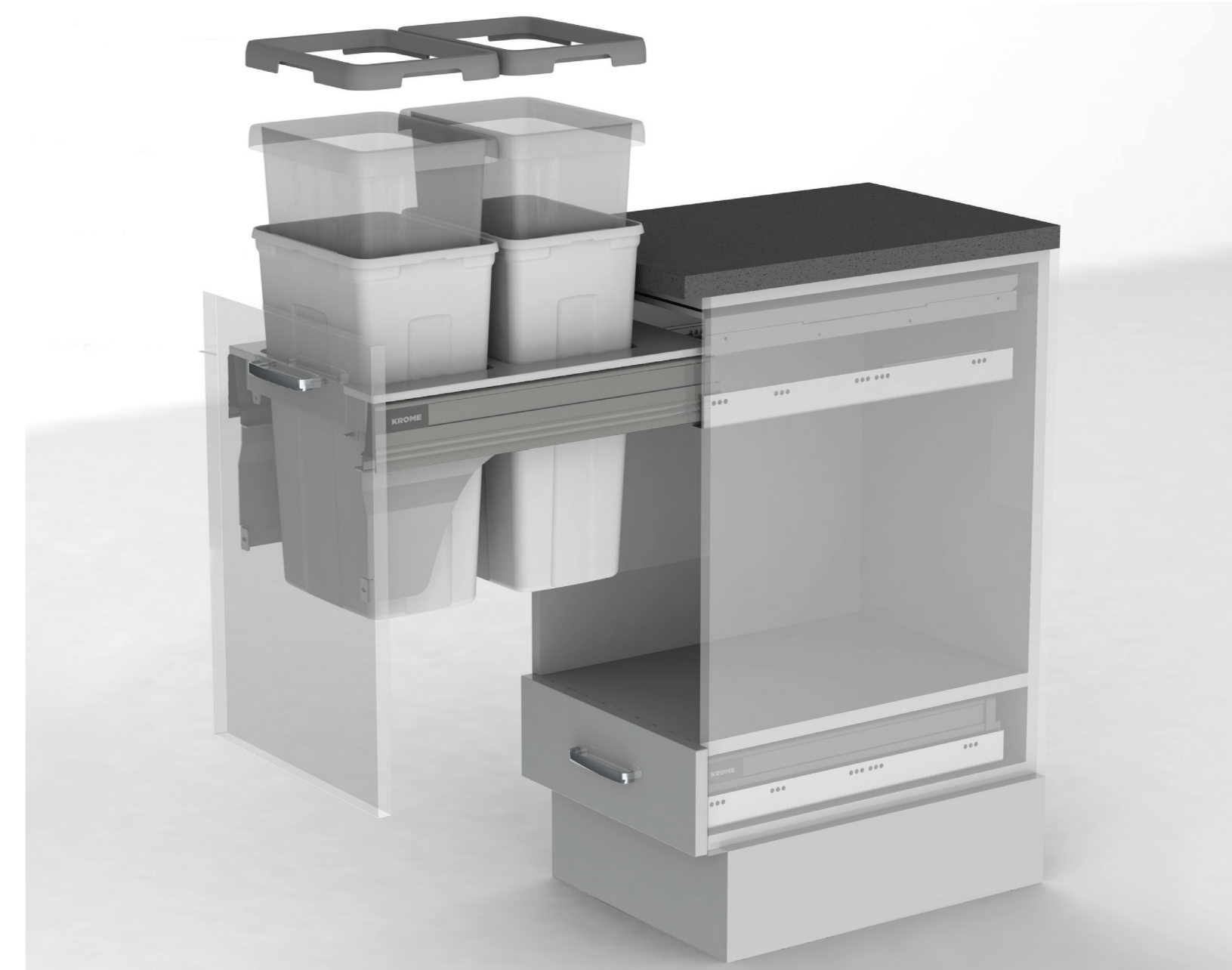
19 WONDERLAND DRIVE, EASTERN CREEK NSW 2766
LOCKED BAG 90, WETHERILL PARK BUSINESS CENTRE NSW 1851

T 1300 668 371 F 1300 668 372 E info@nover.com.au W www.nover.com.au

0700005 02.2019

NOVER

NOVER



Krome Bin Range

The Krome bin range has been designed to easily fit our popular Krome double wall drawer system. The range suits a 400mm, 450mm and 600mm external cabinet width. The system drops neatly into the Krome drawer and is installed within minutes.

Krome Soft Close Twin Bin 36L (2 x 18L)

- To suit a 400mm external cabinet
- Width: 362-368mm
- Depth: 513mm
- Height: 470mm
- Colour: White
- Buckets come complete with concealed liner, plus removable plastic lid to seal and minimise odour
- This bin range is designed to suit all Krome double walled drawers
- Please note Krome runners to be ordered separately



DESCRIPTION	CODE
KROME SOFT CLOSE TWIN BIN 36L (2 X 18L)	150460

Krome Soft Close Single Bin 35L (1 x 35L)

- To suit a 400mm external cabinet
- Width: 362-368mm
- Depth: 513mm
- Height: 570mm
- Colour: White
- Bucket comes complete with concealed liner, plus removable plastic lid to seal and minimise odour
- This bin range is designed to suit all Krome double walled drawers
- Please note Krome runners to be ordered separately



DESCRIPTION	CODE
KROME SOFT CLOSE SINGLE BIN 35L (1 X 35L)	150462

Krome Soft Close Twin Bin 54L (2 x 27L)

- To suit a 450mm external cabinet
- Width: 412-418mm
- Depth: 506mm
- Height: 570mm
- Colour: White
- Buckets come complete with concealed liner, plus removable plastic lid to seal and minimise odour
- This bin range is designed to suit all Krome double walled drawers
- Please note Krome runners to be ordered separately



DESCRIPTION	CODE
KROME SOFT CLOSED TWIN BIN 54L (2 X 27L)	150466

Krome Soft Close Twin Bin 70L (2 x 35L)

- To suit a 600mm external cabinet
- Width: 562-568mm
- Depth: 513mm
- Height: 570mm
- Colour: White
- Buckets come complete with concealed liner, plus removable plastic lid to seal and minimise odour
- This bin range is designed to suit all Krome double walled drawers
- Please note Krome runners to be ordered separately



Note : 50kg Krome runner recommended for 70L bin system

DESCRIPTION	CODE
KROME SOFT CLOSE TWIN BIN 70L (2 X 35L)	150468

Krome Laundry Hamper Range

Organise your laundry with the Krome Laundry Hamper, the perfect storage solution for your home. Built-in hampers keep dirty laundry hidden away.

Krome Soft Close Laundry Hamper 35L (1 x 35L)

- To suit a 400mm external cabinet
- Width: 362-368mm
- Depth: 506mm
- Height: 570mm
- Colour: White
- Designed to suit all Krome double walled drawers
- Lightweight plastic hamper with solid base to prevent drips
- Concealed lightweight hamper with air vents



DESCRIPTION	CODE
KROME SOFT CLOSE LAUNDRY HAMPER 35L (1 X 35L)	150476

Krome Soft Close Laundry Hamper 48L (1 x 48L)

- To suit a 450mm external cabinet
- Width: 412-418mm
- Depth: 506mm
- Height: 545mm
- Colour: White
- Designed to suit all Krome double walled drawers
- Lightweight plastic hamper with solid base to prevent drips
- Concealed lightweight hamper with air vents



DESCRIPTION	CODE
KROME SOFT CLOSE LAUNDRY HAMPER 48L (1 X 48L)	150478

Krome Soft Close Twin Laundry Hamper 70L (2 x 35L)

- To suit a 600mm external cabinet
- Width: 562-568mm
- Depth: 506mm
- Height: 570mm
- Colour: White
- Designed to suit all Krome double walled drawers
- Lightweight plastic hamper with solid base to prevent drips
- Concealed lightweight hamper with air vents



DESCRIPTION	CODE
KROME SOFT CLOSE TWIN LAUNDRY HAMPER 70L (2 X 35L)	150480

Krome Flip Down Laundry Hamper 48L (1 x 48L)

- To suit a 450mm external cabinet
- Width: 400mm
- Depth: 346mm
- Height: 530mm
- Colour: White
- Lightweight plastic hamper with solid base to prevent drips
- Concealed lightweight hamper with air vents



DESCRIPTION	CODE
KROME FLIP DOWN LAUNDRY HAMPER 48L (1 X 48L)	150486