

Sliding & Folding Systems



Contents

Add some style and class with Indaux Sliding door systems. Improve functionality with the addition of soft close features, now available with our wardrobe door & bi-fold range.

JUNIOR-6 SLIDING SYSTEM	07
ELITE BI-FOLD SYSTEM	13
JUNIOR-4 SLIDING SYSTEM	17
JUNIOR-1 SLIDING SYSTEM	19
WARDROBE ACCESSORIES	20



Indaux Junior-6, Junior-4, Junior-1 & Elite Bi-Fold Systems

Since 1962, Indaux have been specialising in researching, designing and manufacturing quality European furniture components for customers worldwide.

Today, INDAUX leads the furniture fitting sector in Spain and has become a benchmark brand internationally – working in more than 70 countries with over 2000 customers all over the world.

The Junior and Elite systems featured in this brochure are just two examples of the fantastic products available from INDAUX – exclusively through Nover.

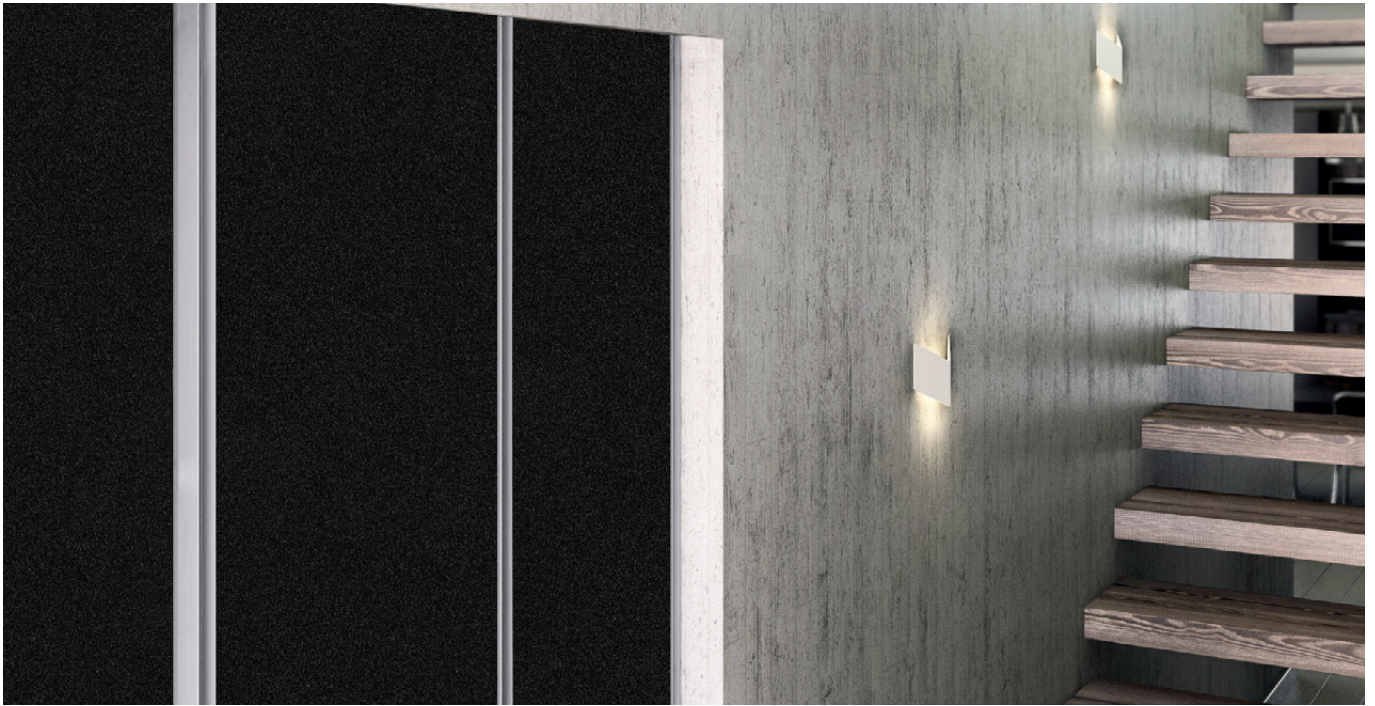
Featuring quality components and clever design, these fittings have been thoughtfully developed and crafted to make easy work of sliding and folding doors for all projects. These solutions are neat, functional and easy to install.

Combined with any of the stylish panel products also available from Nover – such as LUXE mirror gloss – these practical INDAUX fittings have the ability to turn any bi-fold or sliding door requirement into a creative, decorative feature for any space.



Junior-6 Matt Black Track & Handle with Luxe Olmo High Gloss Panels





Junior-6 Silver Anodised Track & Handle with Luxe Negro Pearl Panels



Elite Bi-Fold System with Luxe Roble Frappe

Disclaimer - All colours shown are representations and for illustration purpose only. Actual colours and designs may vary or look different in a larger size. If colour and/or design match is critical please speak to your local account manager about viewing a sample.

Elite Bi-Fold System with Luxe Olmo & Luxe Basalto Pearl High Gloss Panels



Disclaimer - All colours shown are representations and for illustration purpose only. Actual colours and designs may vary or look different in a larger size. If colour and/or design match is critical please speak to your local account manager about viewing a sample.

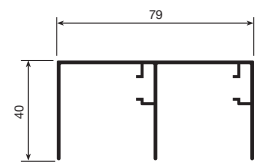
Indaux Junior-6 Sliding System

Indaux Junior-6 Indamatic Soft Close

Soft closing even smoother runners, thanks to their lower bearings and their triple running points which prevent unwanted door movement. But above all it is known for its automatic and cushioned gradual soft closing. Junior-6 Indamatic has a 50kg load rating.

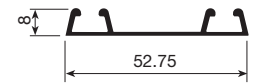
DOUBLE UPPER TRACK

DESCRIPTION	COLOUR	LENGTH	CODE
INDAUX INDAMATIC JUNIOR-6 DOUBLE UPPER TRACK	SILVER ANODISED	4.2M	440253
INDAUX INDAMATIC JUNIOR-6 DOUBLE UPPER TRACK	WHITE	4.2M	440254
INDAUX INDAMATIC JUNIOR-6 DOUBLE UPPER TRACK	MATT BLACK	4.2M	440248



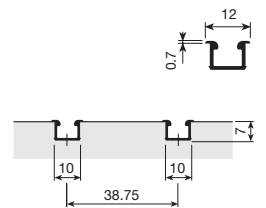
DOUBLE LOWER TRACK

DESCRIPTION	COLOUR	LENGTH	CODE
INDAUX INDAMATIC JUNIOR-6 DOUBLE LOWER TRACK	SILVER ANODISED	4.2M	440257
INDAUX INDAMATIC JUNIOR-6 DOUBLE LOWER TRACK	WHITE	4.2M	440258
INDAUX INDAMATIC JUNIOR-6 DOUBLE LOWER TRACK	MATT BLACK	4.2M	440249



SINGLE LOWER TRACK

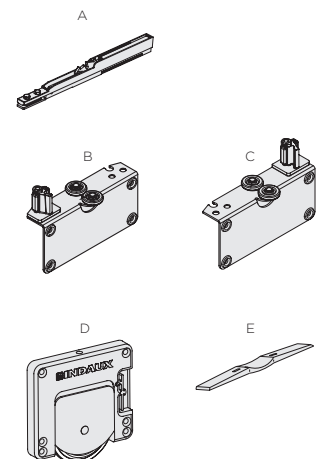
DESCRIPTION	COLOUR	LENGTH	CODE
INDAUX INDAMATIC JUNIOR-6 SINGLE LOWER TRACK	SILVER ANODISED	4.2M	440255
INDAUX INDAMATIC JUNIOR-6 SINGLE LOWER TRACK	WHITE	4.2M	440256



NOTE: Single and double lower track are universal for both Indamatic and Classic

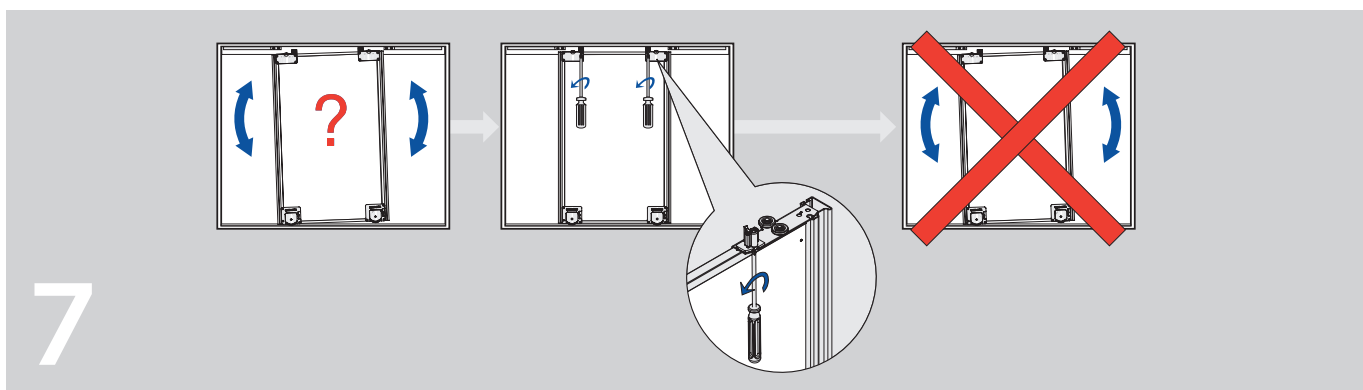
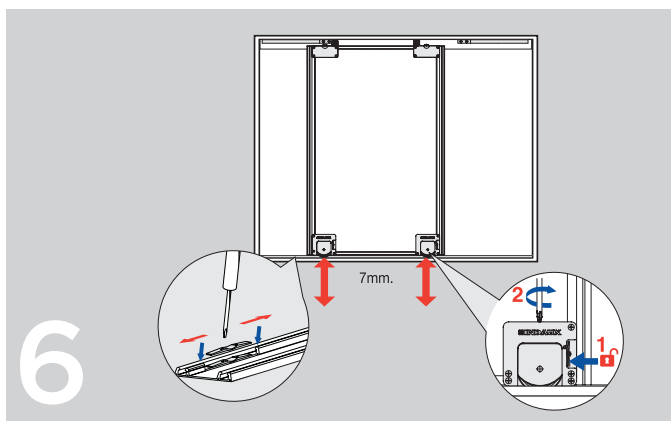
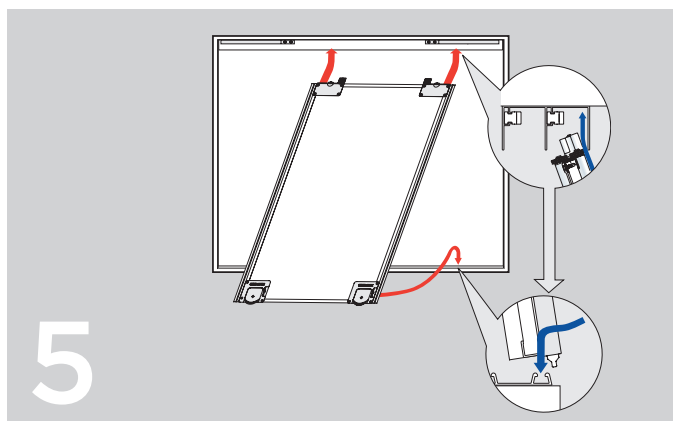
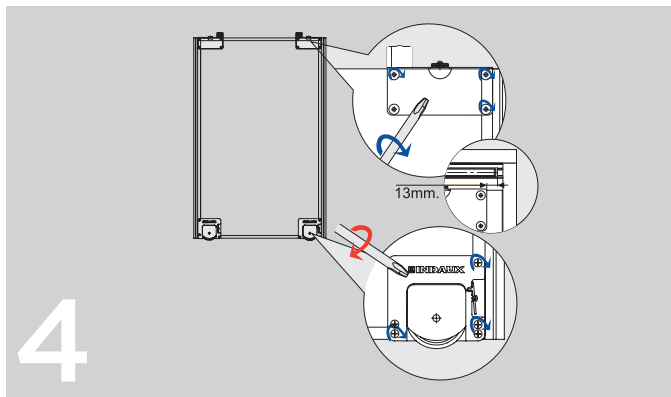
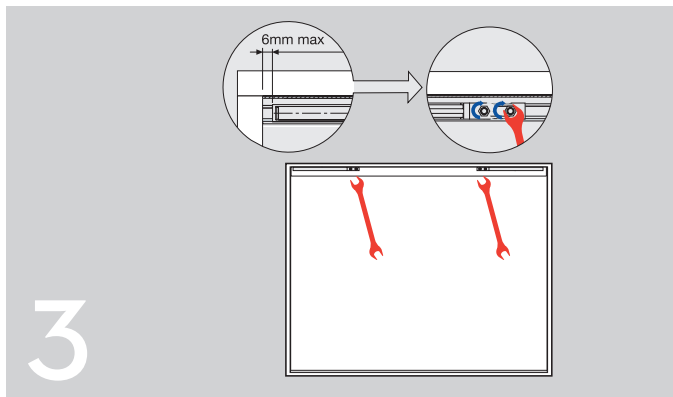
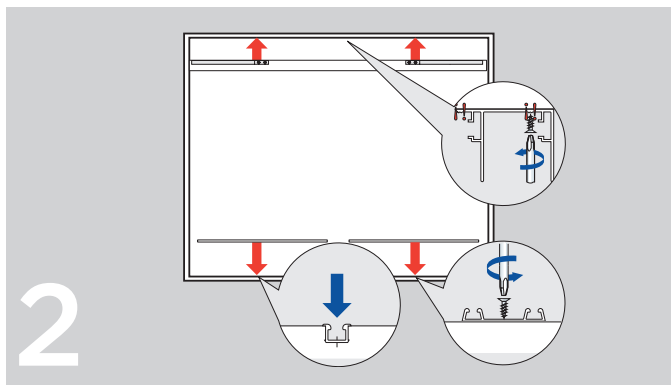
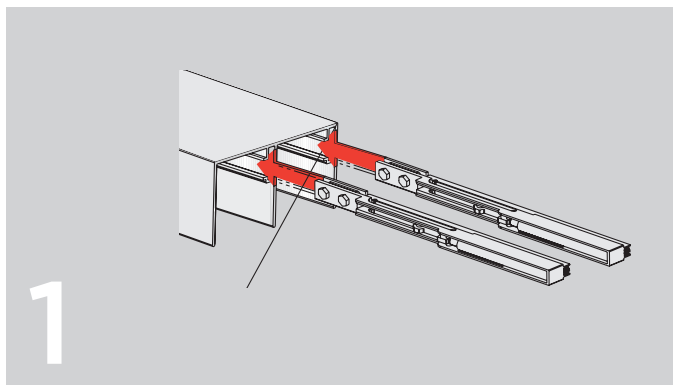
2 DOOR | 3 DOOR SOFT CLOSE COMPONENT SETS

DESCRIPTION	CODE
INDAUX 2 DOOR COMPONENT SET INDAMATIC	440267
INDAUX 3 DOOR COMPONENT SET INDAMATIC	440268



EACH BAG CONTAINS	2 DOOR	3 DOOR
A CUSHIONED AUTOMATIC GRADUAL CLOSING INDAMATIC	4 UNITS	4 UNITS
B RIGHT HAND TOP ROLLER INDAMATIC	2 UNITS	3 UNITS
C LEFT HAND TOP ROLLER INDAMATIC	2 UNITS	3 UNITS
D BOTTOM ROLLER INDAMATIC	4 UNITS	6 UNITS
E DOOR POSITIONER INDAMATIC		1 UNIT

Indaux Junior-6 Indamatic Assembly



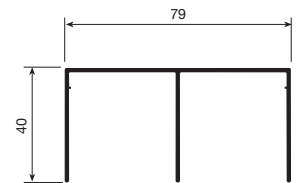
Indaux Junior-6 Classic

Indaux Junior-6 Classic

The standard version is easily assembled and stands out due to its soft and light but efficient closing mechanism. Junior-6 has a 50kg load rating.

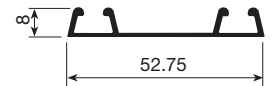
DOUBLE UPPER TRACK

DESCRIPTION	COLOUR	LENGTH	CODE
INDAUX JUNIOR-6 DOUBLE UPPER TRACK	SILVER ANODISED	4.2M	440251
INDAUX JUNIOR-6 DOUBLE UPPER TRACK	WHITE	4.2M	440252



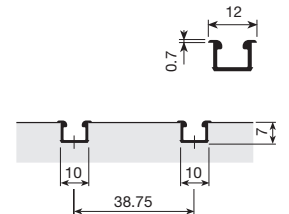
DOUBLE LOWER TRACK

DESCRIPTION	COLOUR	LENGTH	CODE
INDAUX JUNIOR-6 DOUBLE LOWER TRACK	SILVER ANODISED	4.2M	440257
INDAUX JUNIOR-6 DOUBLE LOWER TRACK	WHITE	4.2M	440258



SINGLE LOWER TRACK

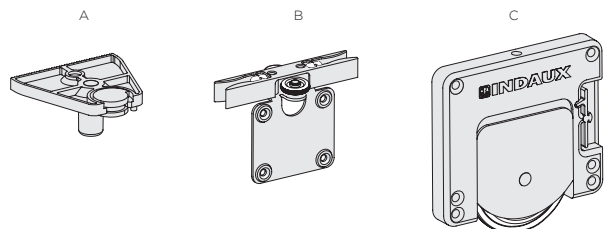
DESCRIPTION	COLOUR	LENGTH	CODE
INDAUX JUNIOR-6 SINGLE LOWER TRACK	SILVER ANODISED	4.2M	440255
INDAUX JUNIOR-6 SINGLE LOWER TRACK	WHITE	4.2M	440256



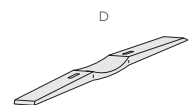
NOTE: Single and double lower track are universal for both Indamatic and Classic

2 DOOR | 3 DOOR COMPONENT SETS

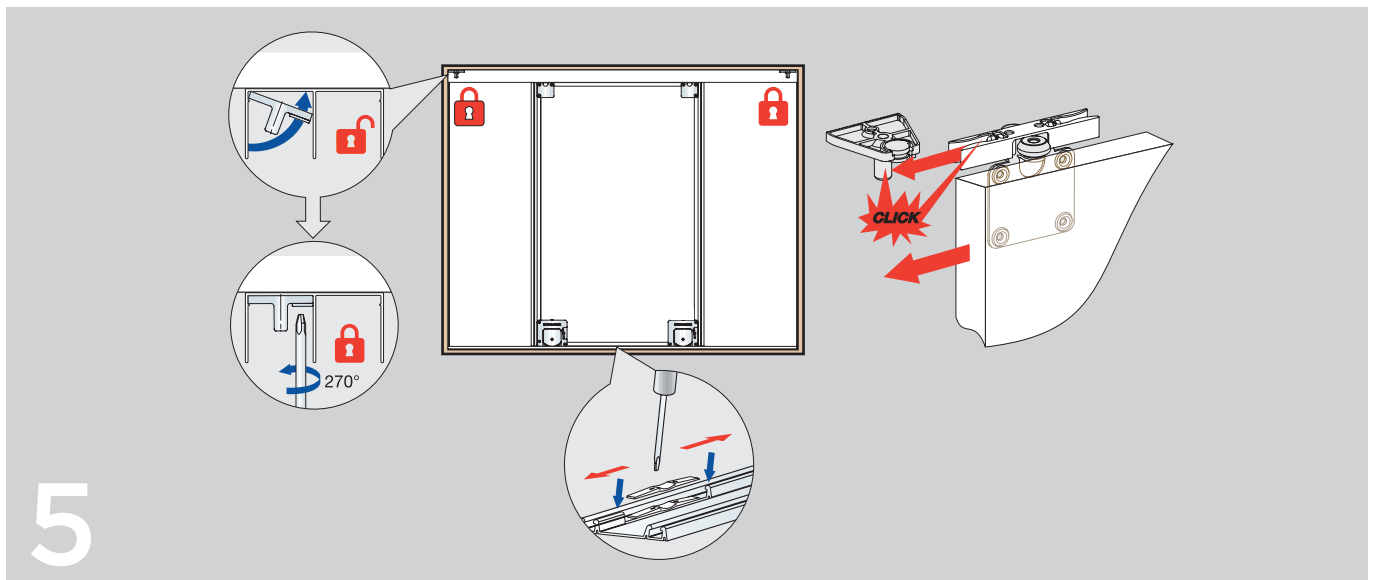
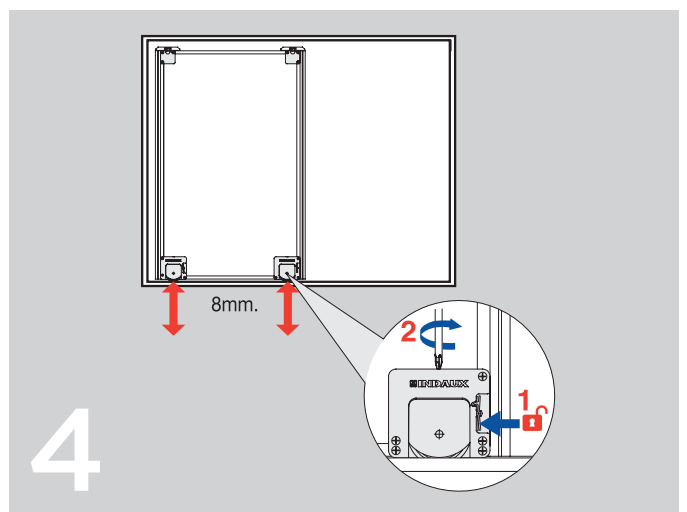
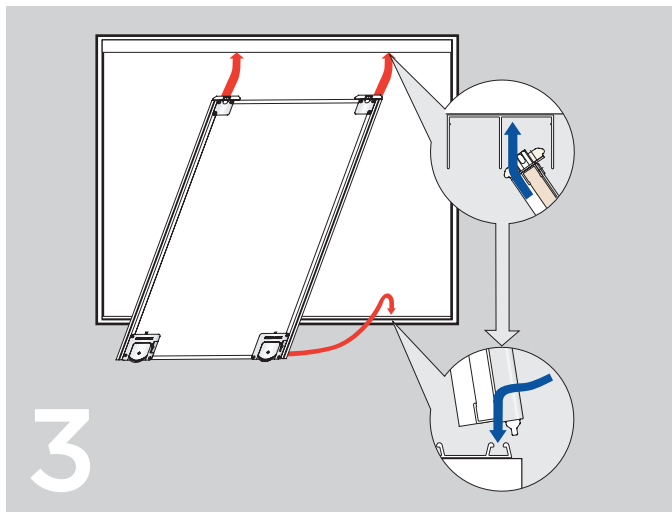
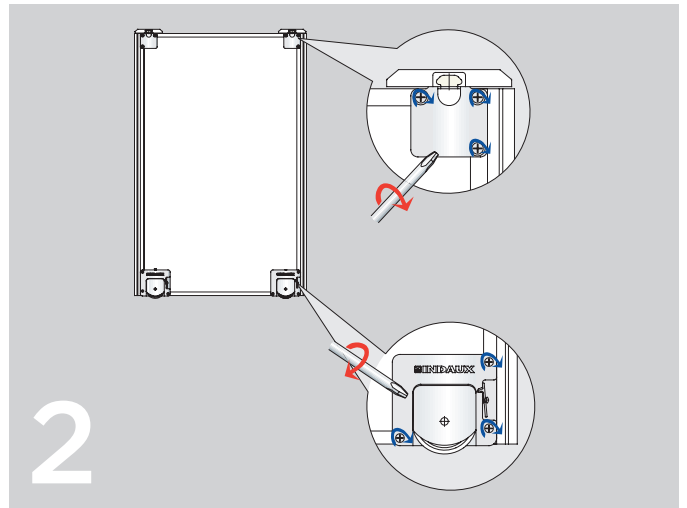
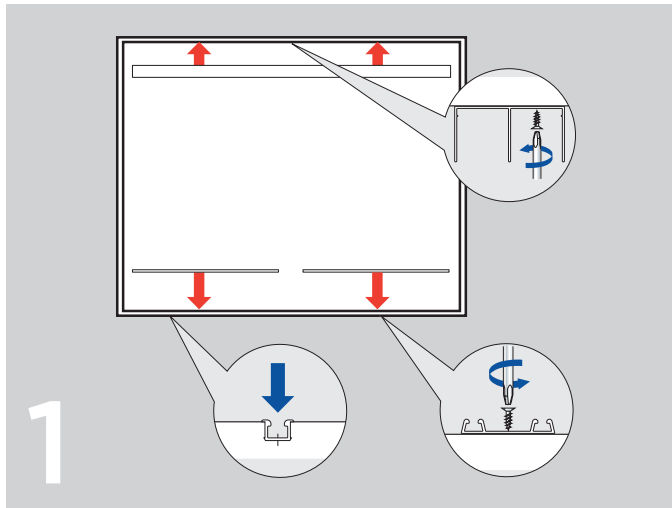
DESCRIPTION	CODE
INDAUX 2 DOOR COMPONENT SET CLASSIC	440261
INDAUX 3 DOOR COMPONENT SET CLASSIC	440262



EACH BAG CONTAINS	2 DOOR	3 DOOR
A UPPER TRACK STOP	4 UNITS	4 UNITS
B TOP ROLLER	4 UNITS	6 UNITS
C BOTTOM ROLLER	4 UNITS	6 UNITS
D DOOR POSITIONER		1 UNITS



Indaux Junior-6 Classic Assembly

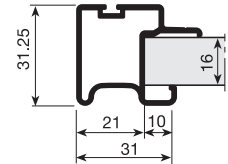


Indaux Junior-6 Handle

Indaux Junior-6 Handle Profile 16mm

Aluminium handle designed to suit 16mm door thickness

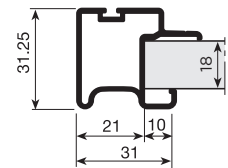
DESCRIPTION	COLOUR	LENGTH	CODE
INDAUX JUNIOR-6 HANDLE PROFILE 16MM	SILVER ANODISED	5.2M	440265
INDAUX JUNIOR-6 HANDLE PROFILE 16MM	WHITE	5.2M	440266
INDAUX JUNIOR-6 HANDLE PROFILE 16MM	MATT BLACK	5.2M	440277



Indaux Junior-6 Handle Profile 18mm

Aluminium handle designed to suit 18mm door thickness

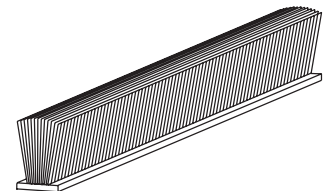
DESCRIPTION	COLOUR	LENGTH	CODE
INDAUX JUNIOR-6 HANDLE PROFILE 18MM	SILVER ANODISED	5.2M	440273
INDAUX JUNIOR-6 HANDLE PROFILE 18MM	WHITE	5.2M	440271
INDAUX JUNIOR-6 HANDLE PROFILE 18MM	MATT BLACK	5.2M	440276



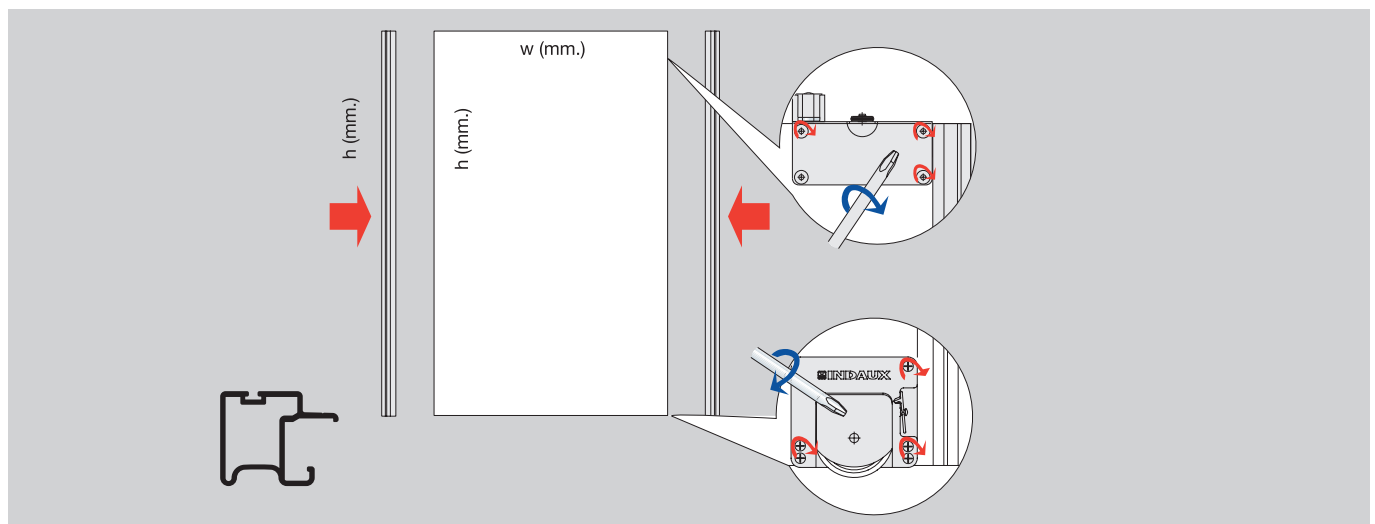
Indaux Dust Strip

DESCRIPTION	CODE
INDAUX DUST STRIP 5.5MM X 10MM	440259

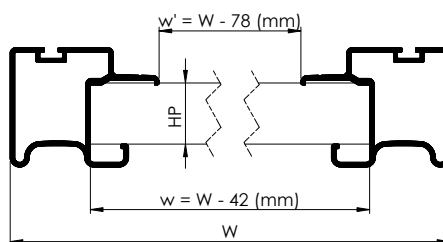
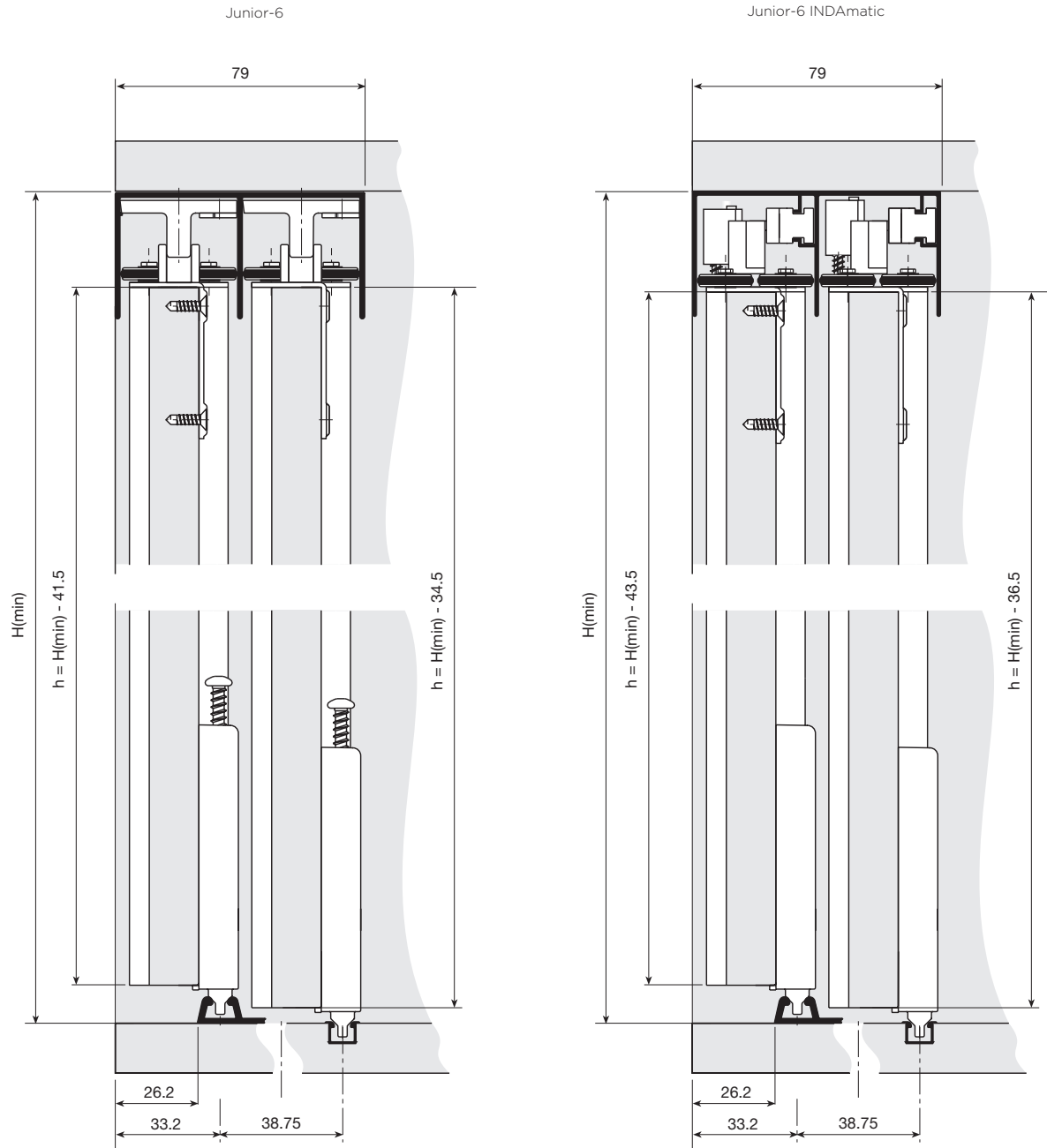
NOTE: Sold by the metre



Assembly

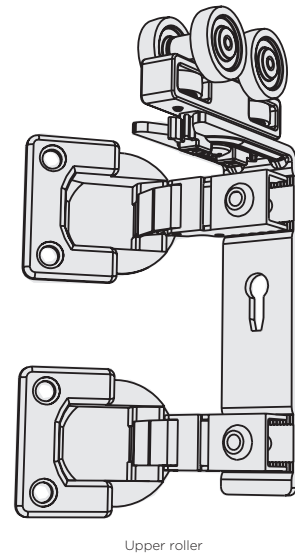
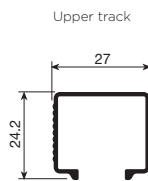
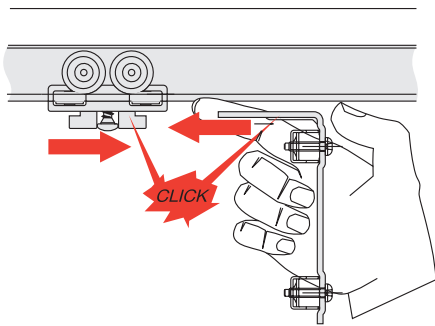


Indaux Junior-6 Handle Profile Technical Data



Indaux Elite Bi-Fold System

Indaux Elite Bi-fold Upper Track

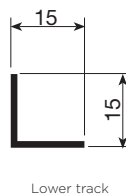
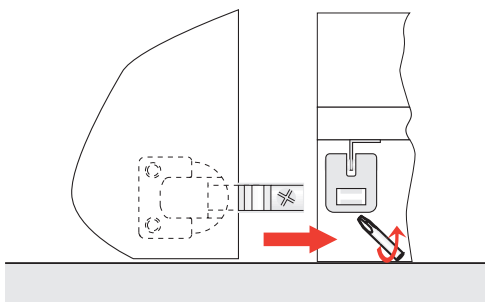


Upper roller

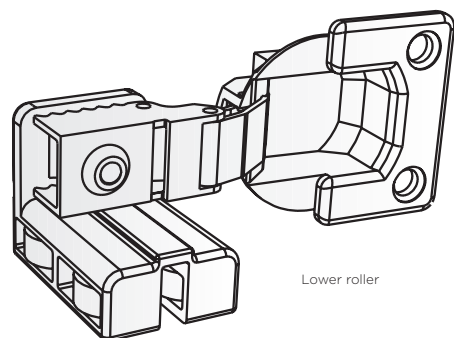
DESCRIPTION	CODE
INDAUX ELITE UPPER TRACK SILVER ANODISED 2.0M	440231
INDAUX ELITE UPPER TRACK SILVER ANODISED 3.0M	440230
INDAUX ELITE UPPER TRACK WHITE 2.0M	440235

NOTE: Fix Top Roller into upper track prior to fixing upper track to the cabinet

Indaux Elite Bi-fold Lower Track



Lower track



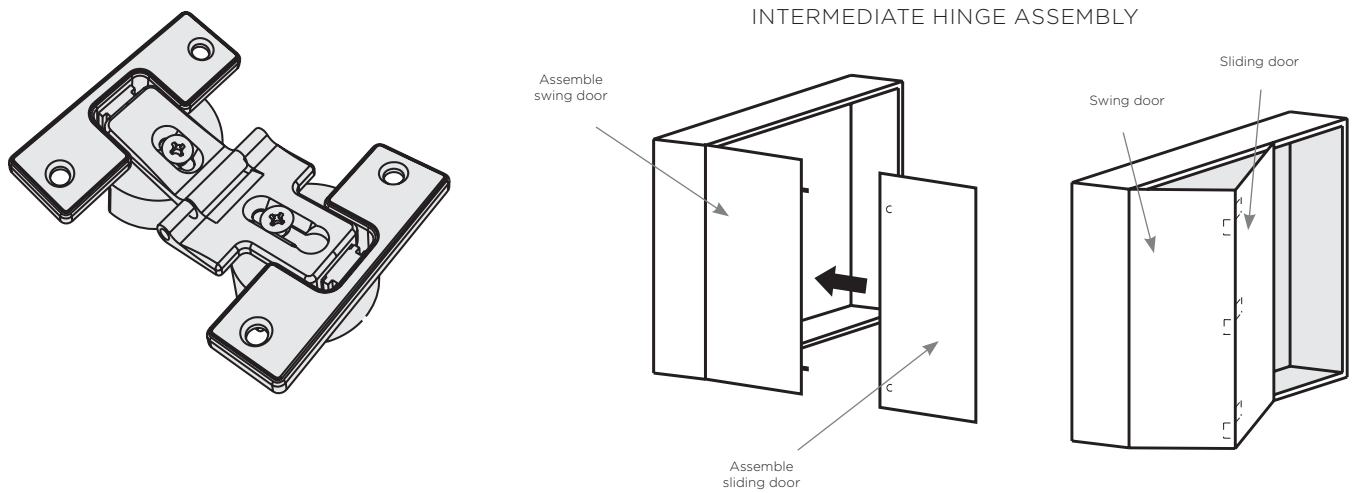
Lower roller

DESCRIPTION	CODE
INDAUX ELITE LOWER TRACK SILVER ANODISED 2.0M	440232
INDAUX ELITE LOWER TRACK WHITE 2.0M	440236

DESCRIPTION	CODE
INDAUX ELITE UPPER ROLLER	440233
INDAUX ELITE LOWER ROLLER	440234

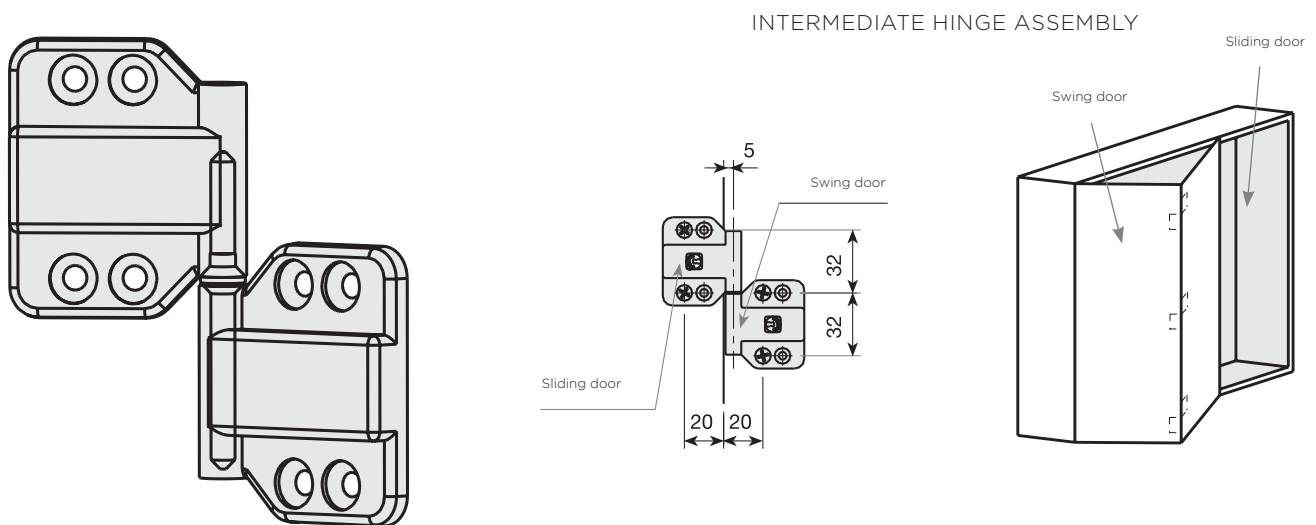
NOTE: The Indaux folding door system has a 20kg weight rating per door. Weight rating is subject to the amount of cabinet hinges used on the fixed door.

Indaux Zamak Hinge



DESCRIPTION	CODE
INDAUX NICKEL PLATED FOLDING DOOR HINGE	440240

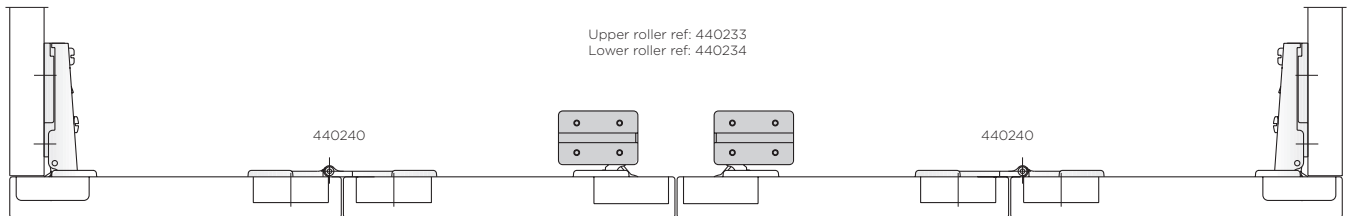
Indaux Nylon Hinge



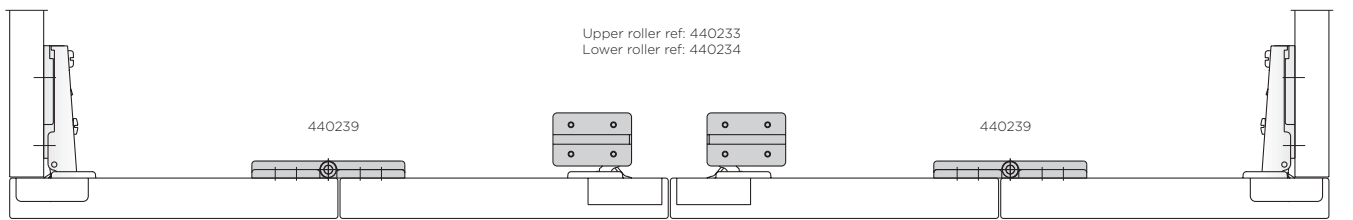
DESCRIPTION	CODE
INDAUX GREY NYLON FOLDING DOOR HINGE	440239

NOTE: Place sliding door intermediate hinges over the swing door hinges.

Hinges Technical Data Nickel Plated

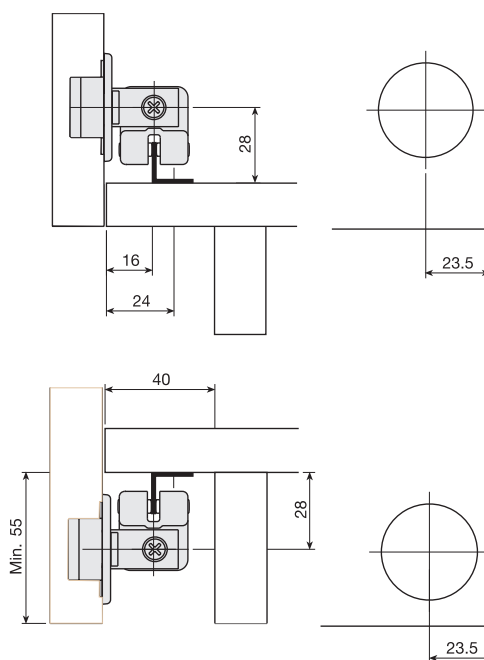
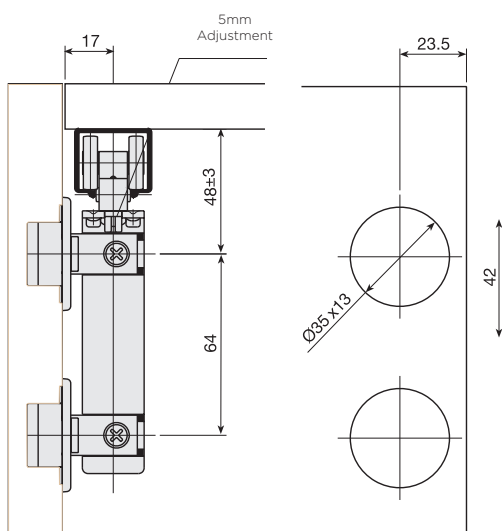


Hinges Technical Data Nylon Hinge

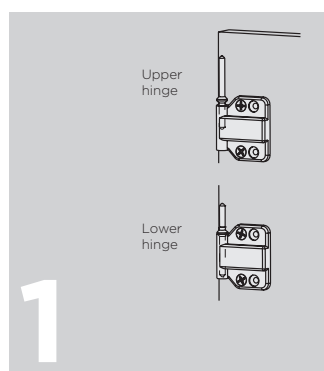


Disclaimer - All colours shown are representations and for illustration purpose only. Actual colours and designs may vary or look different in a larger size. If colour and/or design match is critical please speak to your local account manager about viewing a sample.

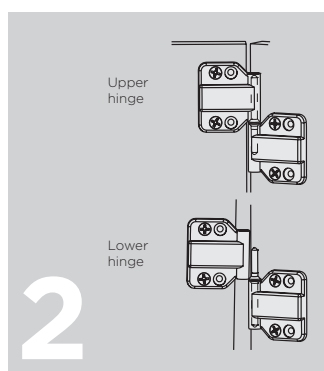
Drilling and Fixing Specifications



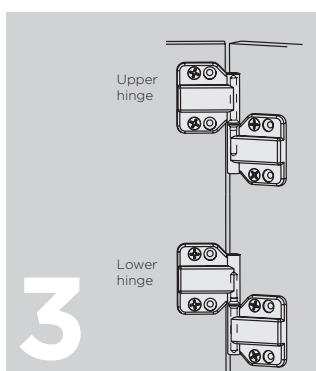
Intermediate Hinge Assembly (view from inside)



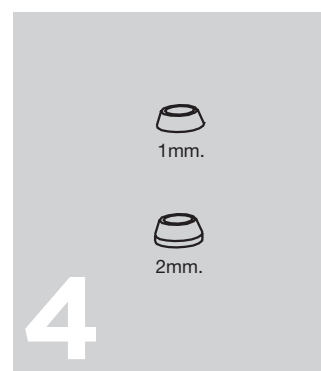
PLACE SHAFTS:
Insert the shortest side of the shaft in the upper hinge. Insert the longest side of the shaft in the lower hinge.



PLACE SLIDING DOOR:
Only the upper hinge must be inserted in the shaft.



ASSEMBLE THE DOOR:
Guiding yourself by the upper hinge shaft, lift the door until lower hinges align with their shaft. When the door falls, it automatically fits into place.



ADJUSTMENTS:
Please use washers provided.

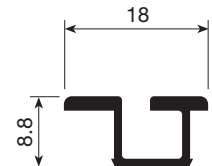
NOTE: Elite roller must be fitted to the upper track prior to fixing upper track to the carcass.

Indaux Junior-4 Sliding System

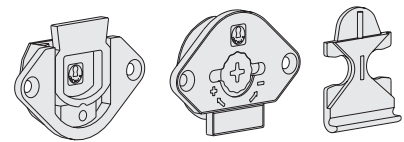
Indaux Junior-4

Junior-4 is a light and easy to fit sliding system. With lower roller vertical adjustment and a weight capacity of 50kg, Junior-4 is a versatile and easy to fit sliding solution.

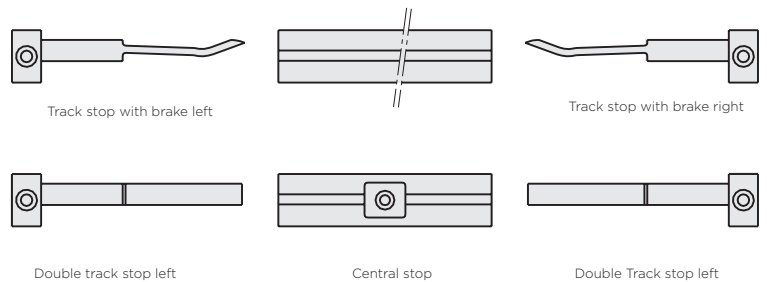
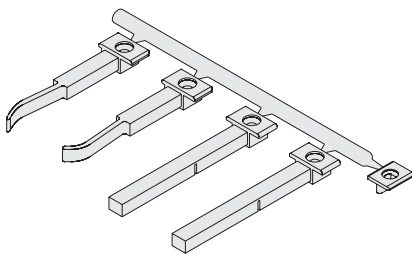
DESCRIPTION	COLOUR	LENGTH	CODE
INDAUX JUNIOR-4 UPPER / LOWER SINGLE TRACK	WHITE	3M	440221
INDAUX JUNIOR-4 UPPER / LOWER SINGLE TRACK	SILVER ANODISED	3M	440222



DESCRIPTION	CODE
INDAUX JUNIOR-4 SET OF FITTINGS	440223



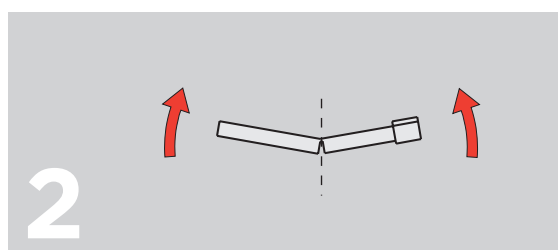
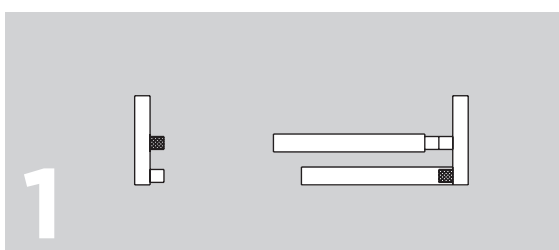
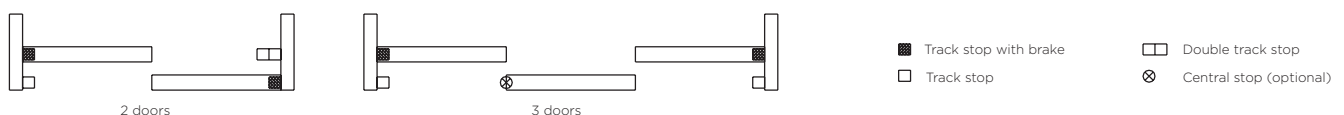
NOTE: Lower roller with steel ball-bearing mounted wheel.
Two sets required per door



DESCRIPTION	CODE
INDAUX JUNIOR-4 BRAKE SET WHITE	440224
INDAUX JUNIOR-4 BRAKE SET BROWN	440225

NOTE: Product code consists of 1 left-hand track stop with brake, 1 right-hand track stop with brake, 1 double left-hand track stop, 1 double right-hand track stop and 1 track stop.

Assembly

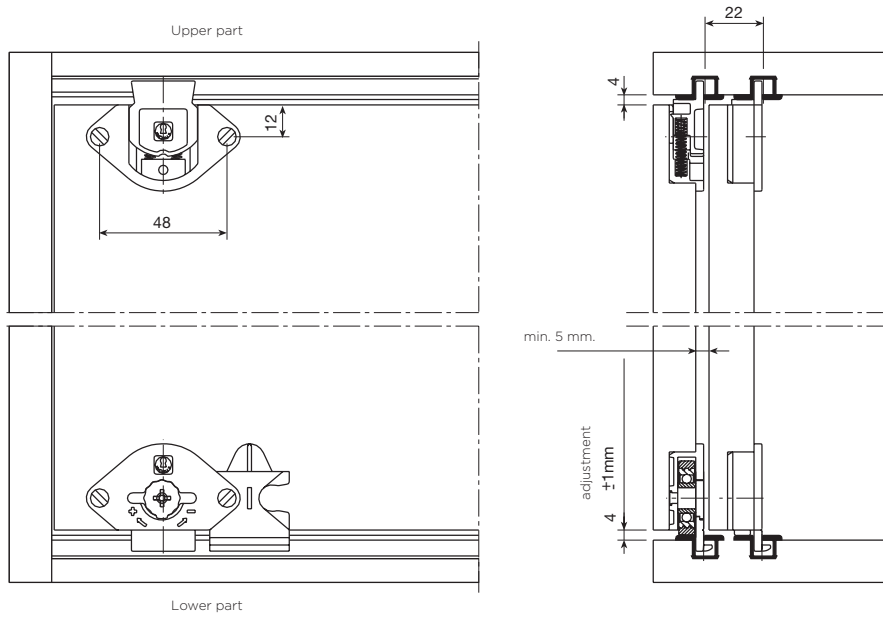


The double track stop allows the access to the pulling profile of the inner door

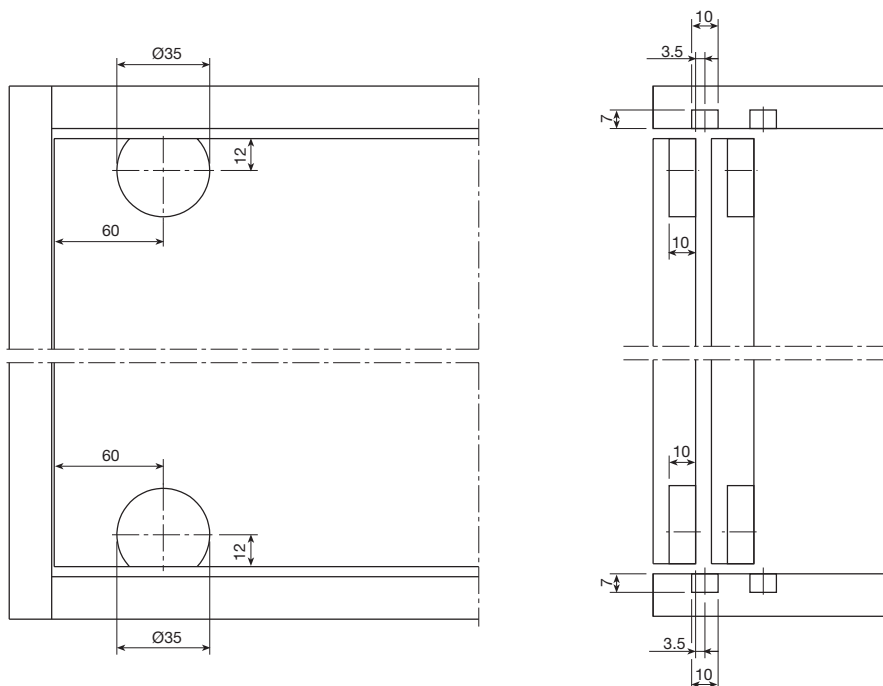
To get a single track stop, just break the double track stop.

Indaux Junior-4 Door Technical Data

Assembly



Drilling Plan

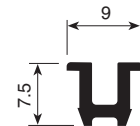


Indaux Junior-1 Sliding System

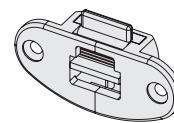
Indaux Junior-1

Junior-1 is a light and easy to fit sliding system with a 12kg loading capacity.

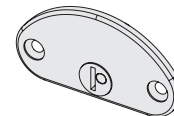
DESCRIPTION	COLOUR	LENGTH	CODE
INDAUX JUNIOR-1 UPPER / LOWER TRACK	WHITE	2.0M	440205
INDAUX JUNIOR-1 UPPER / LOWER TRACK	BROWN	2.0M	440206



DESCRIPTION	CODE
INDAUX JUNIOR-1 UPPER GUIDE BROWN	440207



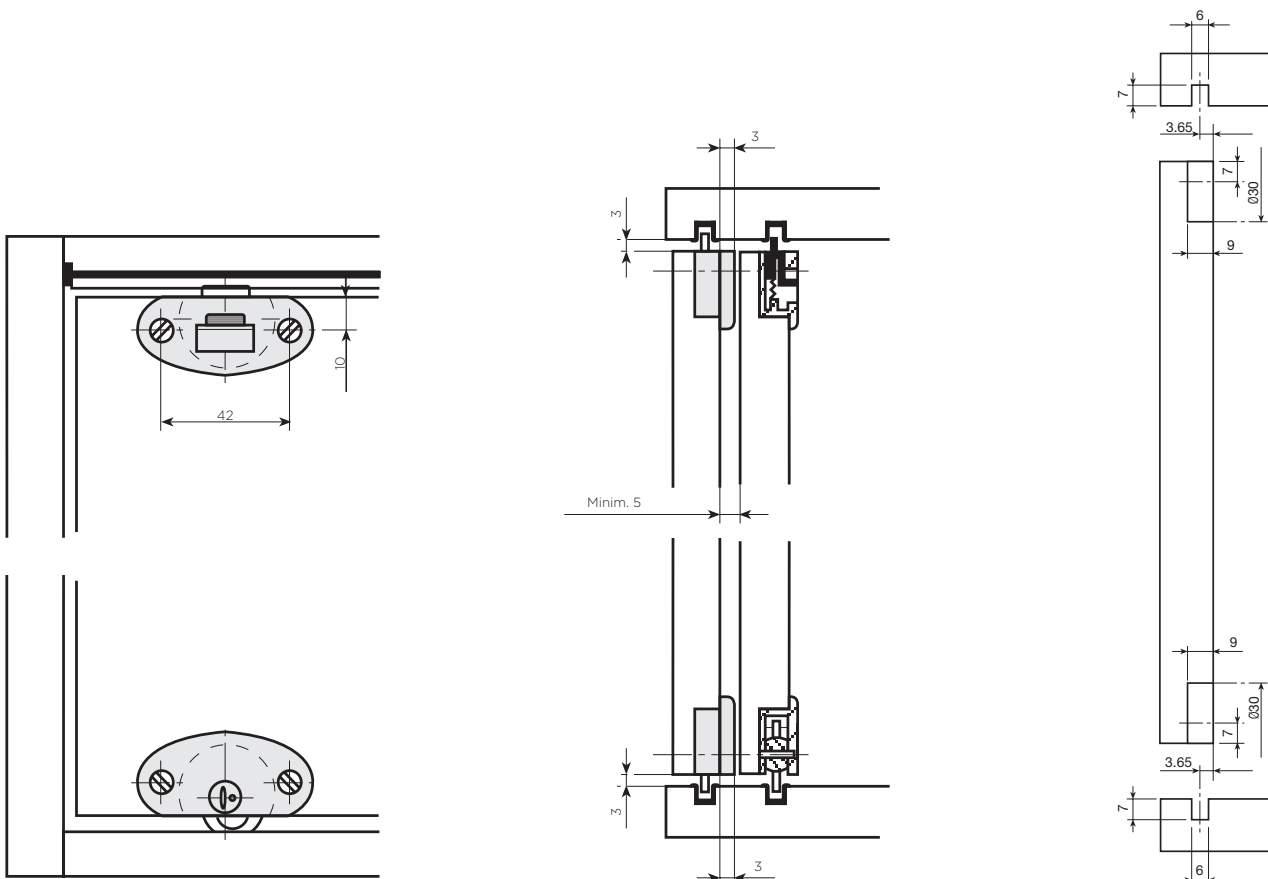
DESCRIPTION	CODE
INDAUX JUNIOR-1 LOWER GUIDE BROWN	440208



DESCRIPTION	CODE
INDAUX JUNIOR-1 EDGE STOP WHITE	440209
INDAUX JUNIOR-1 EDGE STOP BROWN	440210



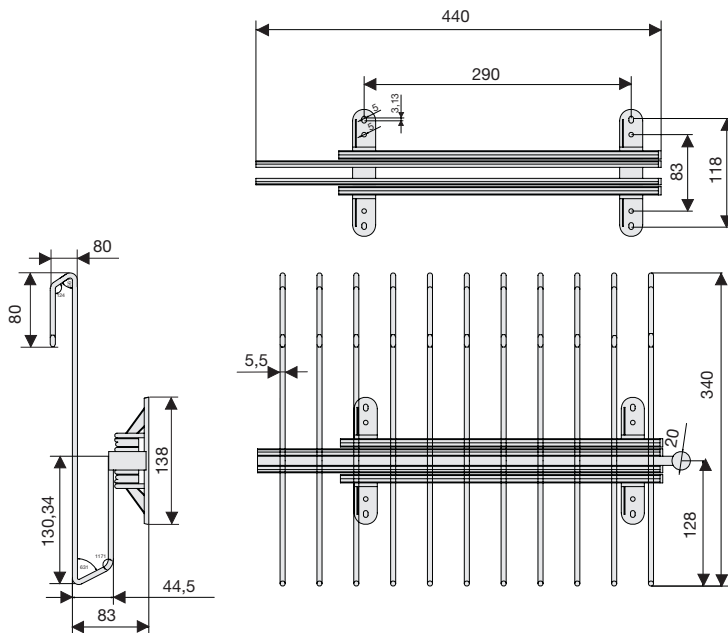
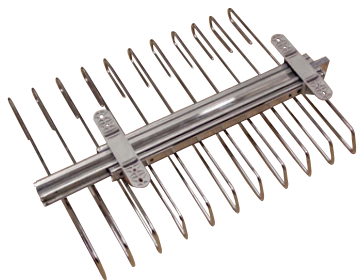
Indaux Junior-1 Technical Data



Wardrobe Accessories

Pull-Out Trouser Rack

- 440mm length



DESCRIPTION	CODE
PULL-OUT TROUSER RACK	440098

Krome Pull Out Adjustable Shoe Rack

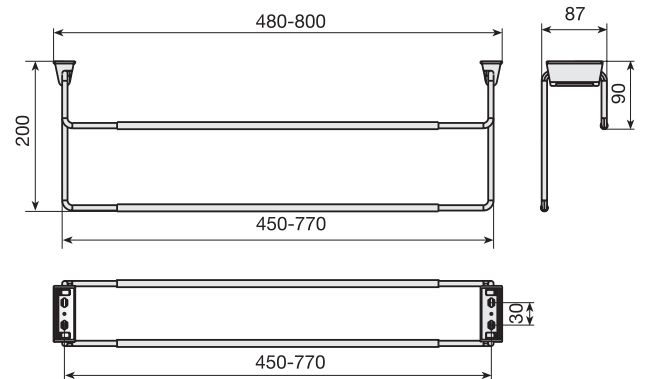
- Shoe rack with ball bearing slides
- 558-964mm x 448mm x 120mm chrome



DESCRIPTION	CODE
KROME ADJUSTABLE SHOE RACK	950030

Extendable Shoe Rack

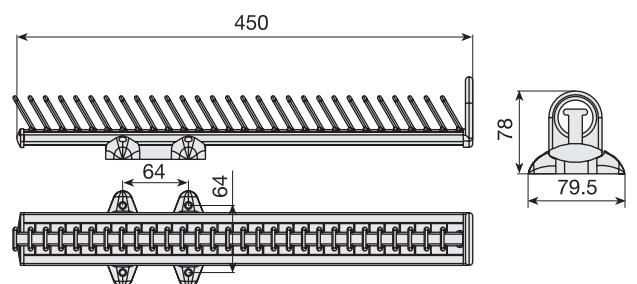
- Chrome plated extendable shoe rack
- 480-800mm



DESCRIPTION	CODE
EXTENDABLE SHOE RACK	440094

Tie Rack

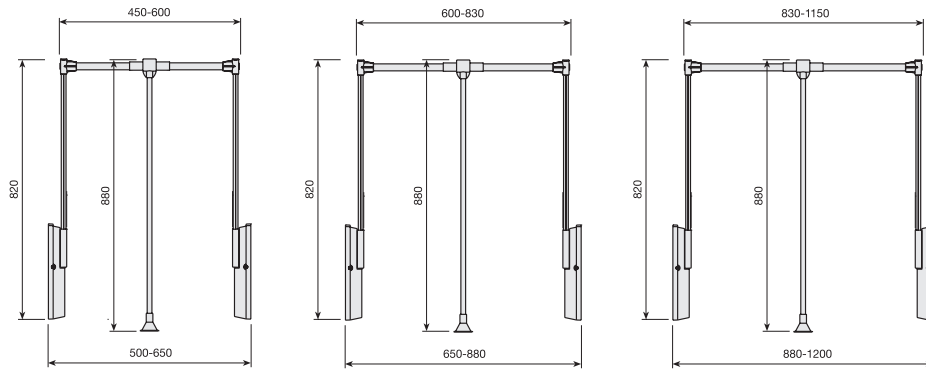
- Adjustable tie rack
- 450mm grey



DESCRIPTION	CODE
ADJUSTABLE TIE RACK	440096

Krome Double Folding Hanger

- Weight capacity 10kg



DESCRIPTION	CODE
KROME DOUBLE FOLDING HANGER 450-600MM	440090
KROME DOUBLE FOLDING HANGER 600-830MM	440091
KROME DOUBLE FOLDING HANGER 830-1150MM	440092

Krome White Plastic Coated Baskets

- Wardrobe and storage baskets



KROME WIRE BASKET	CODE
KROME BASKET 400MM X 323MM X 140MM WHITE (TO SUIT A 400MM WIDE CARCASE)	950100
KROME BASKET 400MM X 323MM X 200MM WHITE (TO SUIT A 400MM WIDE CARCASE)	950101
KROME BASKET 500MM X 373MM X 140MM WHITE (TO SUIT A 450MM WIDE CARCASE)	950102
KROME BASKET 500MM X 373MM X 200MM WHITE (TO SUIT A 450MM WIDE CARCASE)	950103
KROME BASKET 500MM X 523MM X 140MM WHITE (TO SUIT A 600MM WIDE CARCASE)	950104
KROME BASKET 500MM X 523MM X 200MM WHITE (TO SUIT A 600MM WIDE CARCASE)	950105
KROME BASKET SPACER 20MM WHITE	950110

INDAUX GACELA BOTTOM MOUNT RUNNERS	CODE
INDAUX 400MM SELF-CLOSING GACELA RUNNER 25KG	470003
INDAUX 500MM SELF-CLOSING GACELA RUNNER 25KG	470005

NOTE: runners to be ordered separately.
External carcass recommendation includes an allowance for a 20mm spacer.





LOCATIONS

NSW

Sydney - Head Office

19 Wonderland Drive,
Eastern Creek NSW 2766
Phone: 1300 668 371
Fax: 1300 668 372

Newcastle

93 Munibung Road,
Cardiff NSW 2285
Phone: (02) 4956 6626
Fax: (02) 4956 6619

Port Macquarie

40 Jindalee Road,
Port Macquarie NSW 2444
Phone: (02) 6581 2202
Fax: (02) 6581 2220

Wollongong

3 Lady Penryhn Drive,
Unanderra NSW 2526
Phone: (02) 4271 3266
Fax: (02) 4271 7800

Central Coast

30 Ace Crescent,
Tuggerah NSW 2259
Phone: (02) 4351 2444
Fax: (02) 4351 2455

Orange

38 Leewood Drive,
Orange NSW 2800
Phone: (02) 6362 9666
Fax: (02) 6361 4513

Wagga Wagga

1B Wentworth Street,
Wagga Wagga NSW 2650
Phone: (02) 6921 6499
Fax: (02) 6921 7411

QLD

Brisbane - Main Office

Unit 4/22
Eastern Service Road,
Stapylton QLD 4207
Phone: 1300 599 057
Fax: 1300 599 347

Bundaberg

Phone: 0421 618 639

Sunshine Coast

Phone: 0401 447 574

Townsville

1/33 Hugh Ryan Drive,
Garbutt QLD 4814
Phone: (07) 4775 3500
Fax: (07) 4779 3390

ACT

Fyshwick

Unit 10/145-147 Gladstone Street,
Fyshwick ACT 2609
Phone: (02) 6299 1100
Fax: (02) 6147 3505

VIC

Melbourne

30 Jersey Road,
Bayswater VIC 3153
Phone: (03) 9729 0666
Fax: (03) 9720 5175

NOVER & CO PTY LIMITED
ABN 15 001 706 038

19 WONDERLAND DRIVE, EASTERN CREEK NSW 2766
LOCKED BAG 90, WETHERILL PARK BUSINESS CENTRE NSW 1851

T 1300 668 371 F 1300 668 372 E info@nover.com.au W www.nover.com.au

070341 - 11.2018

NOVER